



Technical Specification

X Series Granulators



Tel +44-1453-768980 • Fax +44-1453-768990 • www.cumberlandeurope.com • Bulletin: CG6-515E • Effective: November 21, 2008 • Supersedes: New

X Series Granulators

Application:

For reclaiming injection molded, blow molded, or extruded scrap. The X Series Granulators are ideal for blow moldings, automotive moldings, ducts, furniture and appliance parts, sprues, runners, bottles, profiles, pipe, light purgings, X-ray film, film and sheet (to 5mm thick), and cosmetic and pharmaceutical destruction.

Features:

Model	Throat Size	Cutting Circle Diameter	Throughput	Approximate Weight
X700	600 x 700 mm	600 mm	820 kg/hr	4535 kg
X1000	600 x 1000 mm		1200 kg/hr	5580 kg
X1400	600 x 1400 mm		1600 kg/hr	7260 kg

Benefits:

- Heavy-duty construction allows granulator to handle heavier loads.
- The rotor knives are bolted to the rotor with high-strength alloy steel bolts.
- Power operated jack screws tilt the hopper and drop the screen cradle for ease of maintenance and clean-out.
- Optimum cutting efficiency with Twinshear knife configuration.
- 3-Chevron-positioned rotor knives scissor cut against the bed knives to provide optimum cutting efficiency, with low power consumption.
- Outboard mounted, heavy-duty, spherical roller bearings prevent bearing contamination.
- The hopper has sound-absorbent materials to minimize airborne and structural noise.
- Open-wing rotor produces high quality granulate.
- Rotating end rings to prevent frictional heat and to prevent dirt migrating into the bearings.
- Heavy duty overall construction: main frame, rotor, downstroke shield, steel plate bedknife blocks & belts. Larger, spherical roller bearings and heavy-duty flywheel sheave.
- Reinforced, heavy-duty screen cradle.
- Pivoting hopper facilitates cleanout and/or maintenance.

Specifications:

	Standard	Standard Options
Infeed	Conveyor feed	Tray and sheet feed, Tray and pipe feed, Tray and feed rolls, Feed rolls only, Side feed
Cutting Chamber	2-bed knife, Twinshear	(3) bed knife, 7-knife twinshear for X1000 and X1400
Rotor	3-knife Twinshear	5-knife Twinshear
Rotor Knives	HCHC, 55°, steep angle	HCHC, keen edge
Bed Knives	HCHC, 2-edge	
Screen	10 mm diameter, swing down	5 mm to 76 mm diameter
Base	Airveyor	
Drive Parts	V-belt	
Electrical Components	Start/Stop push buttons and safety interlocks	
Controls	Customer supplied	IP-55
Labels	Safety labels/English	French/Spanish
Accessories		Blower, separator, common stand

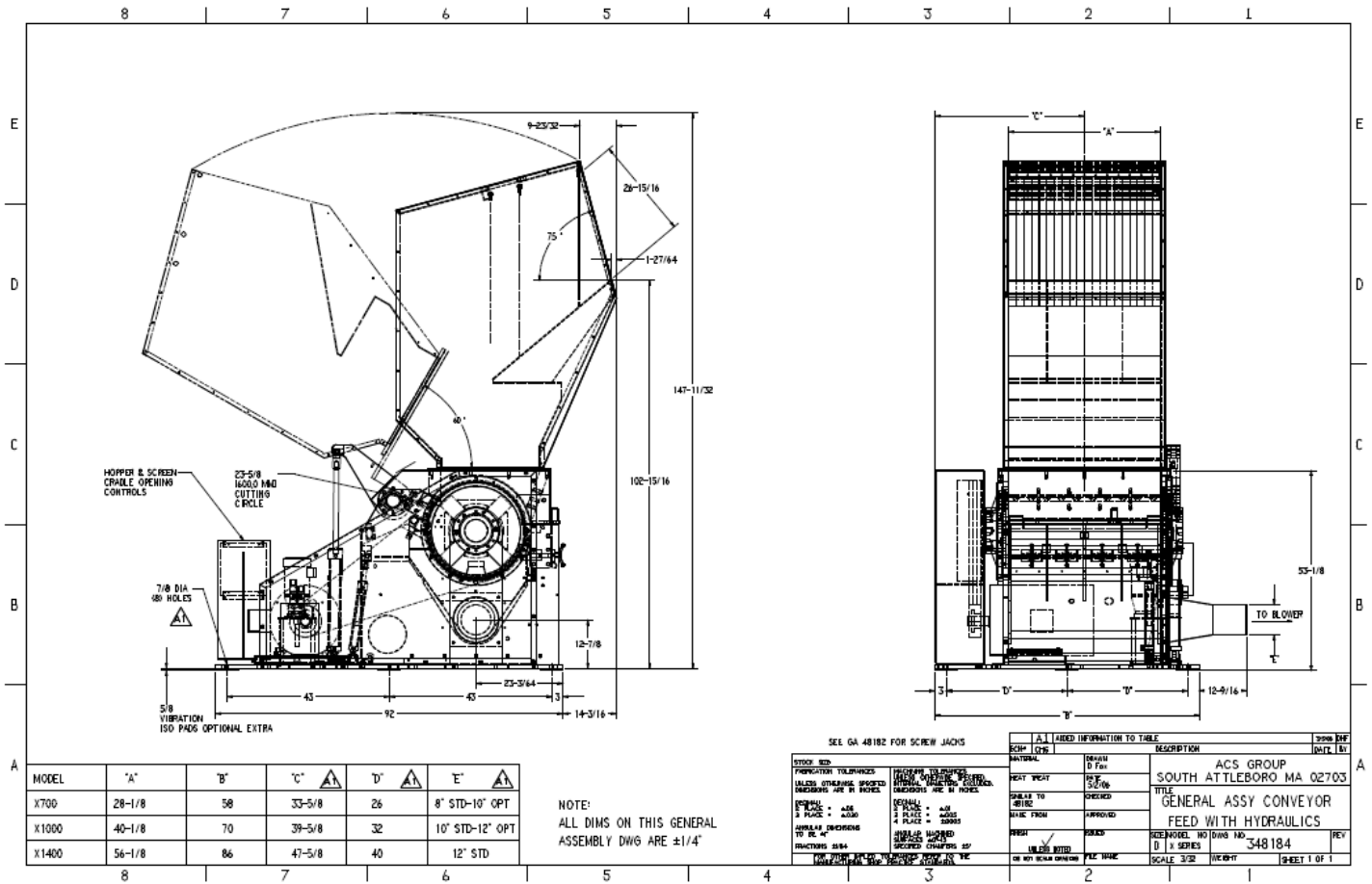
Model	Discharge		Motor	
	Standard	Standard Options	Standard	Standard Options
X700	203 mm Airveyor Chute	254 mm Airveyor Chute	37 kW, 1800 rpm, TEFC, 400	56 kW, 75 kW, TEFC
X1000	254 mm Airveyor Chute		75 kW, 1800 rpm, TEFC, 400	75 kW, 112 kW, TEFC
X1400	305 mm Airveyor Chute	254-356 mm Airveyor Chute	93 kW HP, 1800 rpm, TEFC, 400	75 kW, 112 kW, TEFC

— See Page 2 For X Series Drawings —



Cumberland Europe LTD • Daniels Industrial Estate • Bath Road, Stroud • Gloucestershire, GL53TJ

Cumberland X Series Granulators



Dimensions

Model	A	B	C
X700	714 mm	1473 mm	203 mm
X1000	1019 mm	1778 mm	254 mm
X1400	1424 mm	2184 mm	305 mm