

Tangential Series 5060/5090 Granulators



Reclaim Large, Bulk Parts With a Medium-Sized Granulator

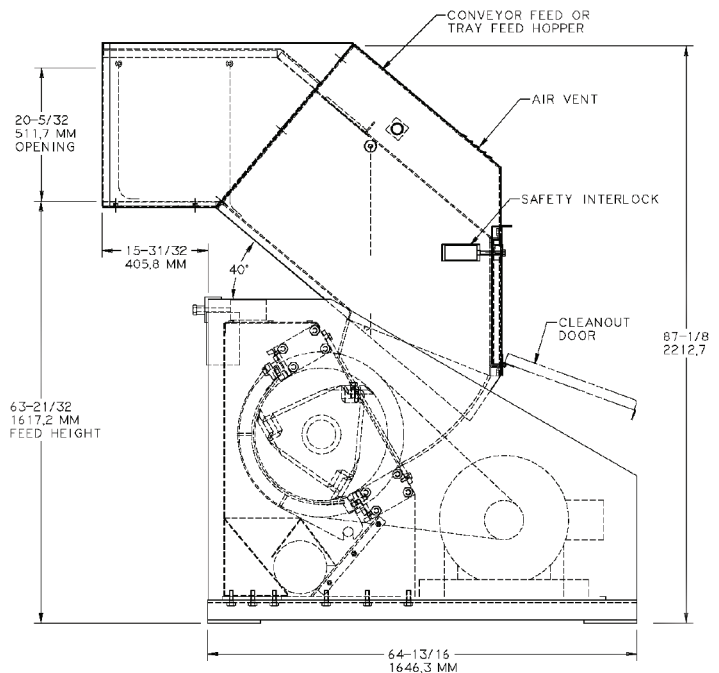
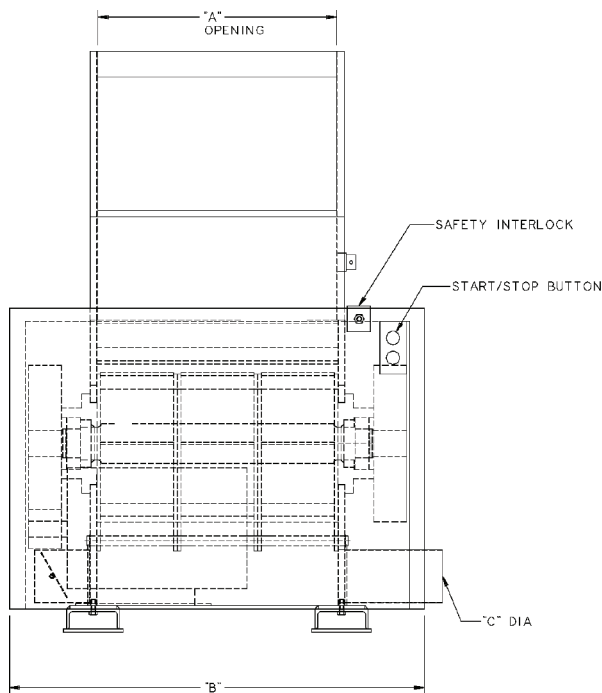
Tangential Series granulators come in two sizes—the 5060 and the 5090. The special cutting chamber designs draw the products into the lower bed knife, where the cutting action traps the item between the rotor knife and bed knife “jaw”. They offer customers a solution

to granulation problems by minimizing part bouncing and optimizing material processing for large bulky parts. In this way, the larger items from rotational molding, large injection molding, and blow molding are more easily accepting, ingested, and processed.

Tangential Series 5060/5090 Granulators

Standard Features

- Angled infeed for easy hand or conveyor feed
- Convenient lower feed height of 1600 mm
- Fully sound dampened to 85dBa or less for most applications
- Tangential feed design for improved application versatility
- Machine bolted/doweled assembly for ease of cleaning and replacement
- Dual bed knives-counter slant, reversible and adjustable doubling knife life
- 3 knife slant cut rotor (steep angle) including solid knife carriers
- Open design-scooped rotor for maximum air flow and ingestion of product
- Large 508 mm cutting circle on rotor for efficient processing of large bulky parts
- High carbon, high chrome (D2) rotor and bed knives
- Swing down reversible screens with solid edges doubling screen life and providing easy maintenance
- Airveyor discharge standard
- TEFV design—1500 RPM motor with sliding motor base
- Star/Delta starter etc. housed in IP55 enclosure. CE safety equipment
- Safety relay and low voltage push buttons provides safer design



Model	A	B	C
5060TF	610	1336	150
5090TF	915	1590	150

CUMBERLAND CORPORATE HEADQUARTERS

CHINA
109 Xinqu Road SIP
Suzhou, China 215126
TEL: +(86) 512 8717 1919
FAX: +(86) 512 8717 1916

UNITED STATES
2900 S. 160th Street
New Berlin, WI 53151
TEL: +1(262) 641-8600
FAX: +1(262) 641-8653

www.cumberlandeurope.com
Email: cumberlandeurope@corpemail.com



ALL DATA SUBJECT TO CHANGE WITHOUT NOTICE

©2010 Cumberland

Bulletin CG5-115.3