



# Technical Specification

## H Series Granulators



Tel +44-1453-768980 • Fax +44-1453-768990 • www.cumberlandeurope.com • Bulletin: CG3-916E • Effective: November 10, 2008 • Supersedes: New

### H Series Granulators

#### Application:

For heavy extruder purgings, sheet and pipe scrap. The H Series Granulators are ideal for pipe, purgings, x-ray film, sheets, post consumer baled bottles, film, and fibers. The H Series granulators feature helical hog rotors

#### Features:

Model	Throat Size	Cutting Circle Diameter	Throughput	Approximate Weight
C1000H	520 x 1015 mm	457 mm	1362 kg/hr	6350 kg
C1400H	520 x 1422 mm		1589 kg/hr	7710 kg
37H	457 x 940 mm	406 mm	1362 kg/hr	5445 kg
50H	510 x 1270 mm	457 mm	1816 kg/hr	18165 kg

#### Benefits:

- Heavy-duty construction allows granulator to handle heavier loads.
- The rotor knives are bolted to the rotor with high-strength alloy steel bolts.
- Reinforced, heavy-duty screen cradle.
- Housed heavy-duty precision spherical roller bearings
- The C- Series hopper has sound-absorbent materials to minimize airborne and structural noise.
- Heavy duty overall construction: main frame, rotor, downstroke shield, steel plate bedknife blocks & belts. Larger, spherical roller bearings and heavy-duty flywheel sheave.
- Power operated on the C-Series jack screws tilt the hopper and drop the screen cradle for ease of maintenance and clean-out.

#### C1000H and C1400H Specifications (Consult Factory for Special Options):

	C1000H		C1400H	
	Standard	Std. Option	Standard	Std. Option
Infeed	Conveyor feed	Sheet feed, Side feed, Pipe feed, Tray feed	Conveyor feed	Conveyor and sheet feed, Conveyor and pipe feed, Sheet feed, Side feed
Cutting Chamber	2 bed knife, Raised D/S	3 bed knife	2-bed knife, Raised D/S	3 bed knife
Rotor	15-knife helical hog		21-knife helical hog	
Rotor Knives	HCHC, Hog type		HCHC, Hog type	
Bed Knives	HCHC, 2-edge		HCHC, 2-edge	
Screen	10 mm dia., HT, swing down	5 to 76 mm diameter	10 mm dia., HT, swing down	5 to 76 mm diameter
Base	Airveyor		Airveyor	
Discharge	254 mm Airveyor chute	203-305 mm Airveyor chute	305 mm Airveyor chute	254 mm Airveyor chute
Motor	112 kW, 1800 RPM, TEFC, 240/400@50hz	75 kW, 93 kW, 150 kW, 186 kW, TEFC	150 kW, 1800 RPM, TEFC, 240/400@50hz	75 kW, 93 kW, 150 HP 186 kW, TEFC
Drive Parts	V-belt, dual flywheels		V-belt, dual flywheels	
Electrical Components	Start/Stop push buttons and safety interlocks		Start/Stop push buttons and safety interlocks	
Controls	Customer supplied	IP-55	Customer supplied	IP-55
Labels	Safety labels/English	French/Spanish	Safety labels/English	French/Spanish
Accessories		Blower, separator		Blower, separator

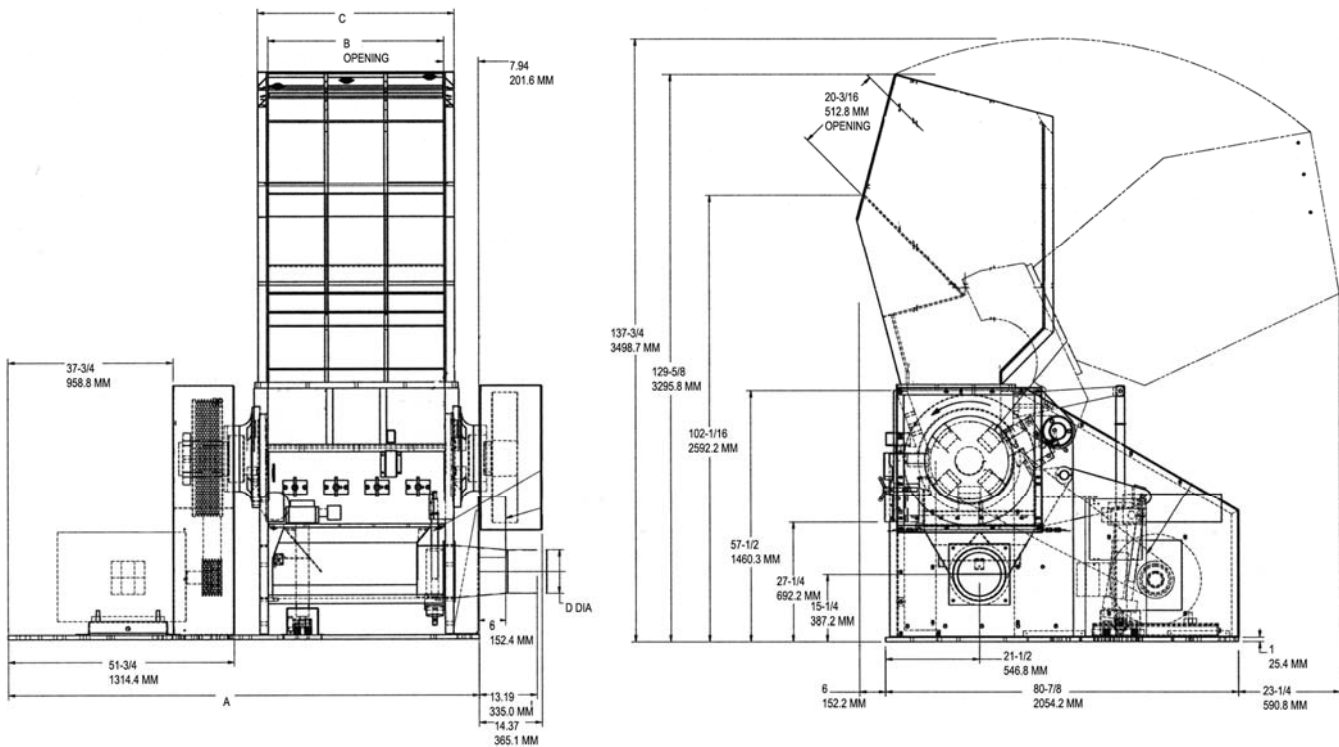
— See Page 2 For 37H and 50H Specifications and H Series Drawings —



### 37H and 50H Specifications

	37H		50H	
	Standard	Standard Options	Standard	Standard Options
<b>Infeed</b>	Conveyor Feed	Tray and sheet feed Tray and pipe feed Pipe feed	Conveyor Feed	Tray and sheet feed Tray and pipe feed Pipe feed
<b>Cutting Chamber</b>	2-bed knife	Hard-facing, water cooling, air purged	2-bed knife	Hard-facing, water cooled, Air purge bearings
<b>Rotor</b>	15-blade Helical Hog		18-blade Helical Hog	25-blade Helical Hog
<b>Rotor Knives</b>	15 HCHC		18 HCHC	
<b>Bed Knives</b>	2 HCHC		2HCHC	
<b>Screen</b>	10 mm Heat Treated	6 mm and larger	10 mm Heat Treated	6 mm and larger
<b>Base</b>	940 mm Step type	Gaylord	940 mm Step type	Gaylord
<b>Discharge</b>	203 mm Airveyor Chute	Gaylord, 203-305 mm Airveyor	254 mm Airveyor Chute	Gaylord
<b>Motor</b>	75 kW	75-112 kW	150 kW	75-150 kW
<b>Drive Parts</b>	V-belt		V-belt	
<b>Electrical Components</b>	Start/Stop push buttons and safety interlocks		Start/Stop push buttons safety interlocks	
<b>Controls</b>	Customer Supplied	240, 400 volt, IP-55	Customer Supplied	
<b>Labels</b>	Safety/caution/operation labels English	Spanish/French	Safety/caution/operation labels English	Spanish/French
<b>Accessories</b>		Blower, Cyclone, Separator, Conveyor		

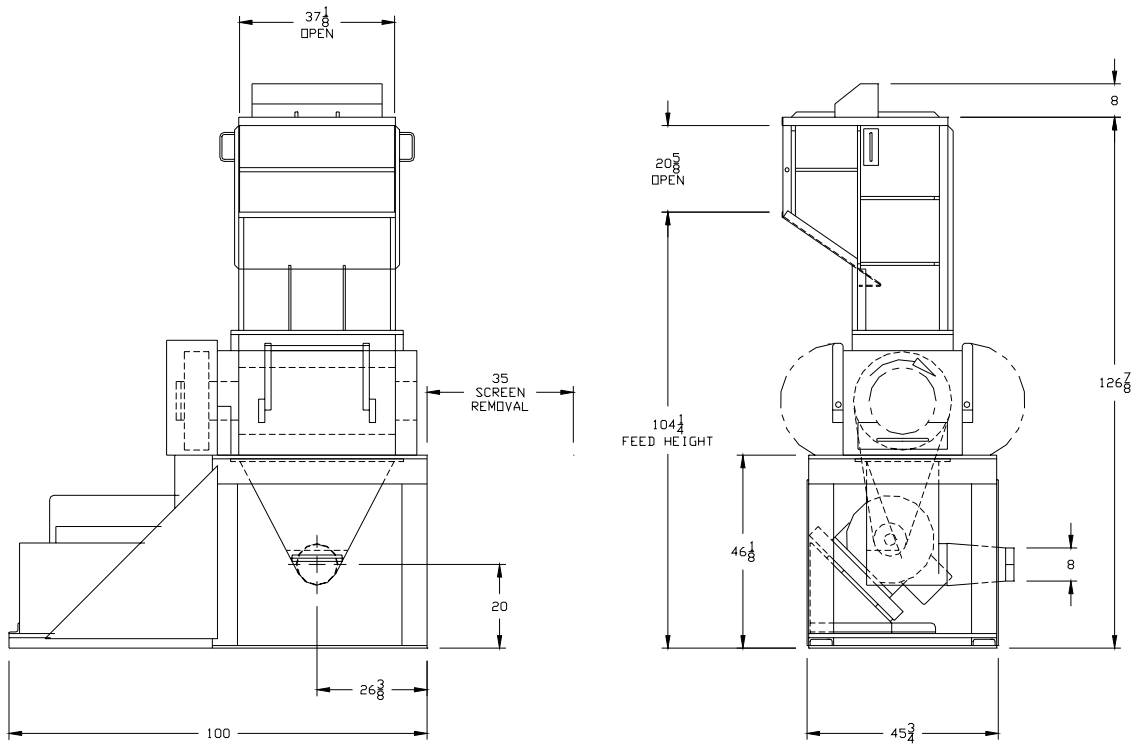
### C1000H and C1400H



### Dimensions

Model	A	B	C	D
1000	2737 mm	1019 mm	1140 mm	254 mm
1400	3143 mm	1426 mm	1546 mm	305 mm

**37H:**



**50H:**

