



## 50 Series Granulators

### Application:

Featuring Twinshear™ knife configuration to increase cutting efficiency, the 50 Series Central-Medium Granulators offer throughputs from 815 kg/hr to 1180 kg/hr. The granulators are easy to maintain with a drop-down screen cradle and hydraulic tilt mechanism on the infeed hopper for quick and easy access to the cutting chamber and rotor. The 50 Series' low feed height and large widths are ideal for thermoforming; a variety of infeed, discharge, and rotor options provide added flexibility for almost any application.

### Features:

Model	Cutting Chamber, cm (mm)	Throughput, kg/hr
50x100	50x107, (508x1067)	817
50x150	50x158, (508x1575)	1180

### Benefits:

- Airveyor discharge provides continuous material evacuation.
- A drop-down screen cradle provides quick screen access for simplified maintenance.
- Twinshear™ knife configuration increases cutting efficiency.
- Hydraulic tilt mechanism for the infeed hopper provides complete access to the cutting chamber and rotor.
- Low feed height and large widths are ideal for thermoforming.

### Specifications:

#### Standard

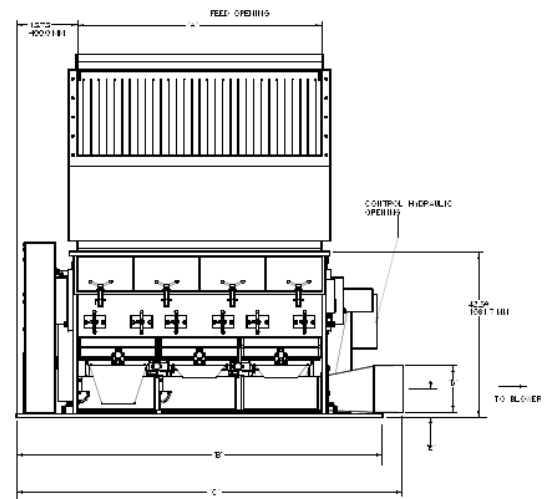
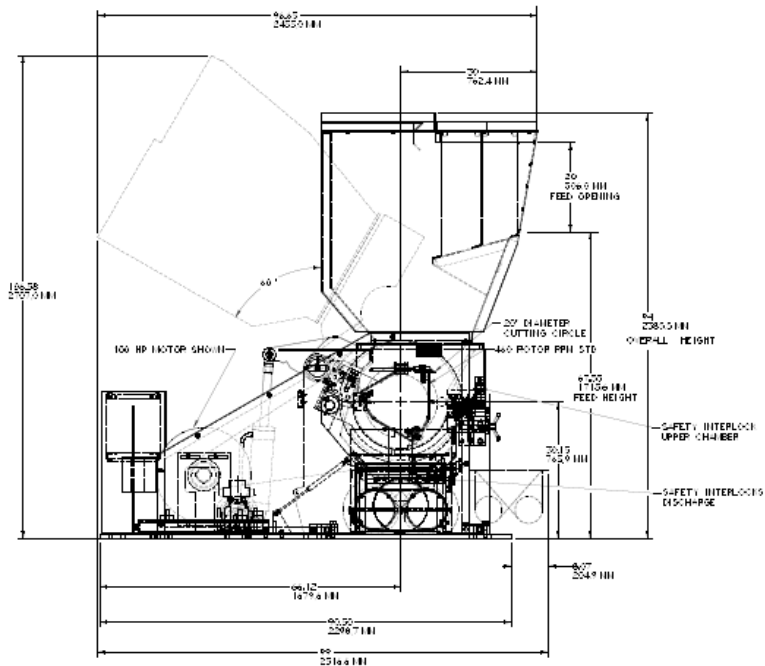
- Hand feed hopper, double wall construction, 1778 mm feed height
- Offset cutting chamber, 2 Twinshear bed knives, top access: single edge, HCHC
- 3-knife Twinshear, steep angle rotor with extended shaft for optional flywheel
- Steep angle, 55°, landed HCHC rotor knives
- HCHC, 2-edge bed knives
- 56 kW, V-belt drive, 450 RPM
- 203 mm Airveyor discharge chute (254 mm on 50x158 model)

#### Optional Features

- Feed role/paddle wheel, sheet feed or side feed
- Modular conveyor feed add-on chute: 2235 mm feed height
- Wear-resistant cutting chamber and rotor
- 3-knife high shear, 5-knife steep angle, or 5-knife high shear rotor (all Twinshear)
- Steep angle, keen edge HCHC high shear, HCHC rotor knives
- Sound enclosure
- 37.3 kW, 45 kW, 75 kW motor
- 254 mm airveyor discharge chute
- Dual flywheel drive
- Variety of screen sizes available
- IP-55, 110v controls with safety interlocks. Free standing control panel with 400v service
- #8 or #10 floor mounting, blower, cyclone, cyclone stand, infeed conveyor



# Cumberland 50 Series Granulators



Dimensions					
Model	A	B	C	D	E
50x100	1067	1867	1910	203	185
50x150	1574	2375	2418	254	185