



25 Series Granulators

Application:

Compact, easily movable, soundproofed, low-speed granulators for beside-the-press granulation, engineered for hand feed, robot feed, and conveyor feed. The 25 Series Granulators are ideal for reject components from the injection, blow molding and extrusion processes.

Features:

Model	Throat Size	Cutting Circle Diameter	Throughput	Approximate Weight
2530	254 x 300 mm	254 mm	203 kg	579 kg
2545	254 x 457 mm	254 mm	248 kg	655 kg

Benefits:

- 3-Blade “scooped” rotor with rotating end discs for maximum cutting efficiency and high inertia flywheel.
- Cumberland-manufactured knives are HCHC steel, specially heat treated with our proprietary process for exceptionally long life, so knife maintenance and replacement costs are minimized.
- Hand knobs provide quick access into screen and pivoting infeed hopper.
- Advanced pivoting infeed design with multi-purpose feed chute.
- Access is simple, quick and convenient for service.
- All interior surfaces are machined and bolted for ease of cleaning.
- Drop-down pull-out cradle with reversible screen offers quick, simple removal.
- Hinged hopper tilts out of the way for unobstructed access to the cutting chamber.
- Compact and easily movable.
- Units have solid steel cutting chamber and bed knife blocks, doweled and bolted end plates for maximum strength.
- Standard integral sound enclosure controls noise and permits access.
- Rotating end discs reduce dust and heat generation.
- Double sealed bearings lubricated for life to minimize downtime.

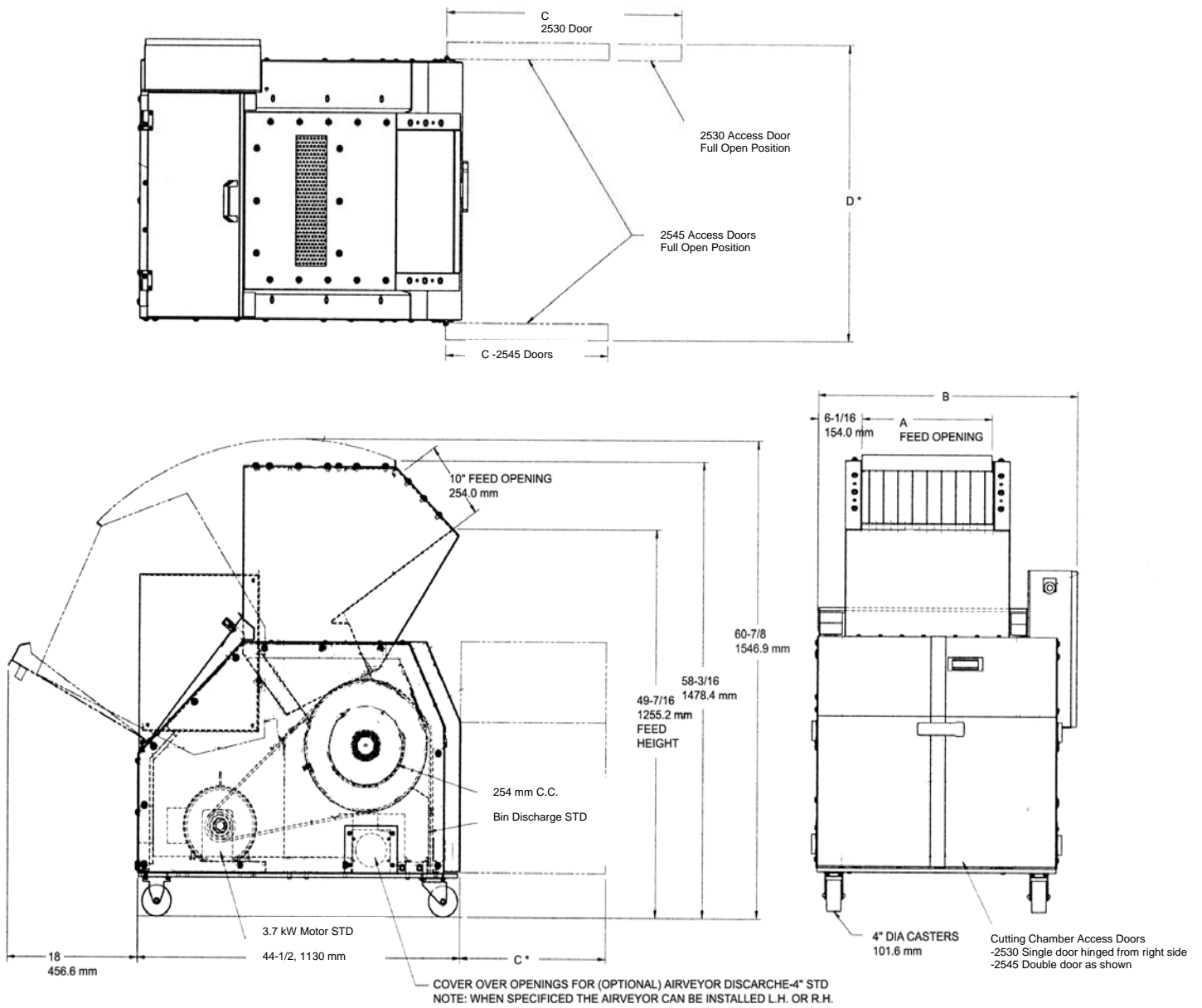
Specifications:

	Standard	Standard Options	Special Options
Infeed	Top/Front Feed – Soundproofed		
Cutting Chamber	Tangential, 2-bed knives		
Rotor	3-knife, scooped with end discs		Multi-knife helical, Low speed
Rotor Knives	HCHC, landed		TCSC
Bed Knives	HCHC, 2 edge		TCSC
Screen	6 mm dia. pivoting drop-down compact	5 mm, 8 mm, 10 mm dia. or larger	
Base	Caster, modular		
Discharge	Metal Bin	Vacuum bin, Airveyor chute	
Motor	3.7 kW, TEFC, 400v	5.6 kW, 7.5 kW, (11 kW - 2545 only)	Special voltage (e.g. 208, 380, & 415)
Drive Parts	V-belt and flywheel		
Electrical Components	Start/Stop push buttons and safety interlocks		
Controls	IP-55		
Labels	English	French/Spanish	
Accessories	Sound-Proofed (to approximately 85 dBA)		

— See Page 2 For 25 Series Drawings —



Cumberland 25 Series :



Dimensions:

MODEL	A	B	C	D
2530	311 mm	759 mm	686 mm	762 mm
2545	464 mm	911 mm	441 mm	970 mm