



2000 Series Tangential Granulators

Tel +44-1453-768980 • Fax +44-1453-768990 • www.cumberlandeurope.com • Bulletin: CG2-525E • Effective: November 21, 2008 • Supersedes: New

2000 Series Tangential Granulators

Application:

The 2000 Series Granulators are designed for reclamation of large, bulky, rotationally-molded, blow-molded, and injection-molded parts. They are ideal for bottles, warm collapsed parisons, automobile parts, furniture sections, gas tanks, and industrial containers/tanks. The 2000 Series Granulators' design-features allow a beside-the-press style granulator to deliver high throughputs reclaiming large, bulky parts that would normally require more costly, higher horsepower central granulators.

Features:

Table with 5 columns: Model, Throat Size, Cutting Circle Diameter, Throughput, Approximate Weight. Rows for models 2024 and 2036.

Benefits:

- Wide infeed accommodates oversized pieces.
40° angled, tangential feed and large cutting circle facilitate ingestion of large parts.
Integral sound reduction reduces noise levels to approximately 85 dBA.
All servicing is through the front, hinged door.
Segmented, drop-down, pull-away screen cradles provide quick access.
Screens are removed and out of the way so operator has completely clear access for ease of service.
Heavy-duty, outboard spherical roller bearings prevent material contamination.
Large screen area provides maximum throughput.
Blower evacuation system with optional sound enclosure and filter assembly provides quiet, continuous material evacuation.
Easy conversion from tray feeding to conveyor feeding.
Convenient hand or conveyor feed height: approximately 1600 mm high.
Interchangeable discharge from left to right.

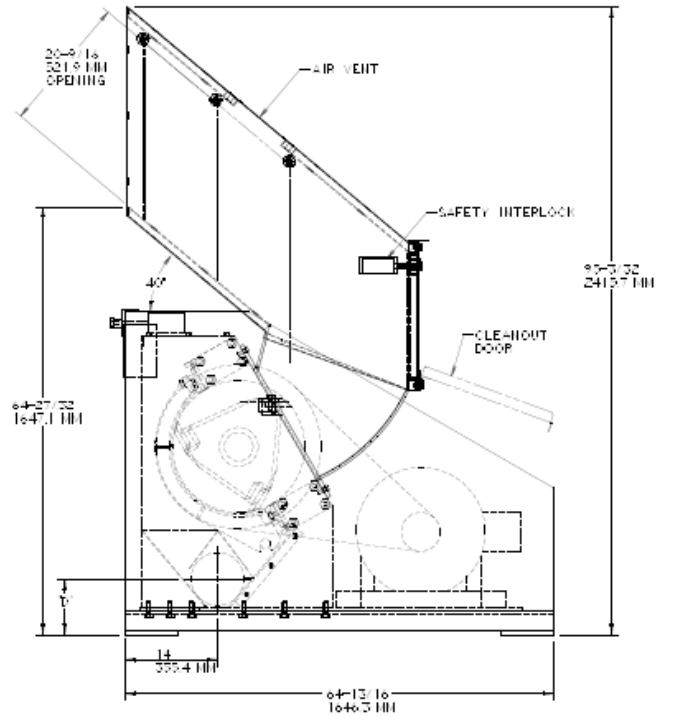
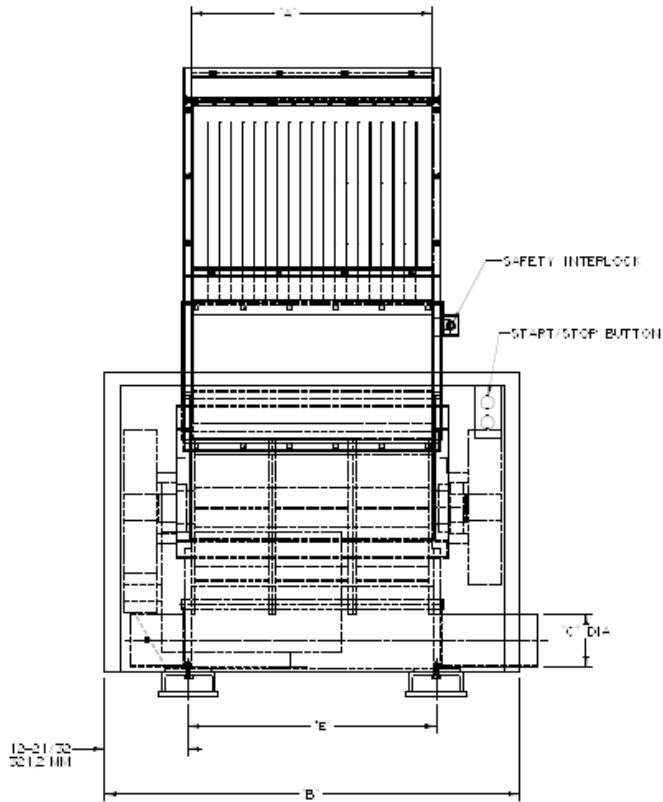
Specifications:

Table with 4 columns: 2024 Standard, 2024 Standard Options, 2036 Standard, 2036 Standard Options. Rows include Infeed, Cutting Chamber, Rotor, Rotor Knives, Bed Knives, Screen Base, Discharge, Motor, Drive Parts, Electrical Components, Controls, Labels, and Accessories.

— See Page 2 For 2000 Series Drawings —



Cumberland 2000 Series Tangential Granulators



Dimensions

Model	A	B	C
2024	610 mm	1337 mm	152 mm
2036	914 mm	1591 mm	203 mm